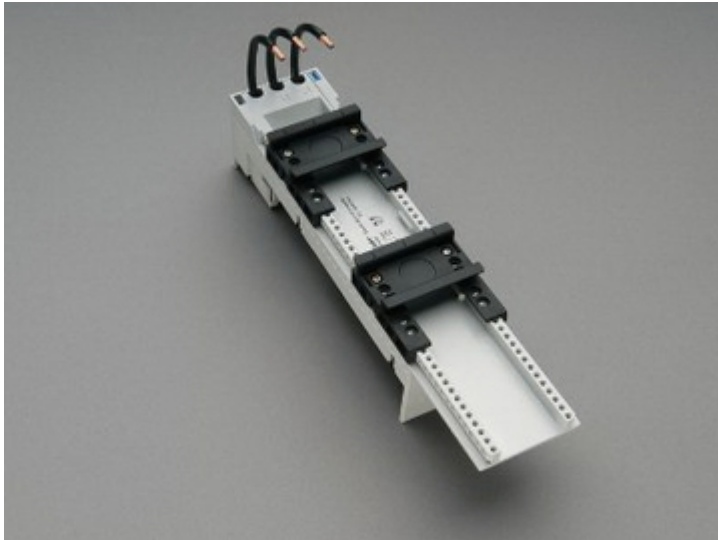


busbar adapter 63 A (32461)



The picture may show a similar product.

Description

Part No.: 32461

EQUES[®] 60Classic

busbar adapter 63 A

2 adjustable mounting rails

54 x 260, with leads AWG 8 (10 mm²)

for busbars 12, 15, 20, 25, 30 x 5, 10 and section busbars

System

60Classic

Advantages of the product

Conductor ends ultrasonically sealed.

Click mechanism when pushing onto the busbar.

Product group 05

Subgroup 24

pack size 4
EAN 4021267324612

catalog page 2020 : 3.11

ECLASS 6.1 27370304
ECLASS 7.1 27370304
ETIM 4.0 EC001531
ETIM 5.0 EC001531

Approvals

Standards

IEC 61439-1:2011
UL 508

Approvals

CSA , UL , DNV GL , EAC



for UL feeder circuits >250V

type number: EEC6063-L
EAC Type: EQ

UL file: E123577, UL category (for USA): NMTR <http://www.ul.com>
UL file: E123577, UL category (for Canada): NMTR7 <http://www.ul.com>
CSA file: 110285, CSA class: 3211-37 <http://directories.csa-international.org>
CCC approval: no certification required

Technical data

Details IEC

Standards

IEC 61439-1:2011

Electrical data IEC

Rated current (IEC): 63 A
rated voltage (IEC) AC: 690 V

rated isolation voltage U_i AC: 800 V

rated surge voltage U_{imp} : 6 kV

short-circuit
withstandability: the short-circuit capacity of the combination of adapter and motor starter depends on the motor starter

power dissipation of the article:

The power dissipation at a typical load of 80 % results to 4.4 W.

(The power dissipation at full load would be 6.9 W.)

Details UL

Standards

UL 508

for UL feeder circuits >250V

Electrical data UL

rated current (UL): 65 A

rated voltage (UL) AC: 600 V

rated frequency (UL): 50 / 60 Hz

SCCR unprotected max.: 7.5 kA
3 cycles (without OPD) @ 600 V AC

SCCR protected max.: 100 kA

SCCR: 100 kA with MS45x 60 A / 480 V AC

100 kA with PKZ5 60 A / 480 V AC

Mechanical data

W x H x D: 54 x 260 x 63

weight: 43.0 kg/100

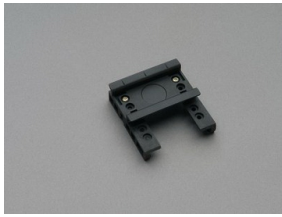
poles: 3-pole

for busbars: 12, 15, 20, 25, 30 x 5, 10 and section busbars

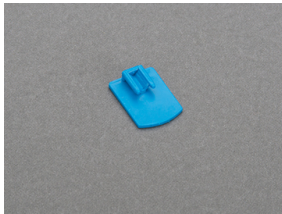
Reference

For compact mounting of complete motor circuits with commercially available switchgear and safe mechanical and electrical connection to the busbar system.

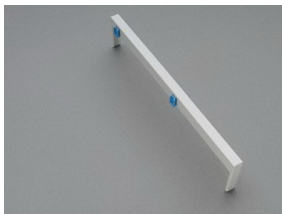
Accessories



32948
mounting rail 54 mm
for busbar adapters



32969
mounting rail end stop



32963
side-mounted module for busbar adapters
attachable to both sides
9 x 200
for: EEC60..



32953
positioning piece for Siemens S2
NEW