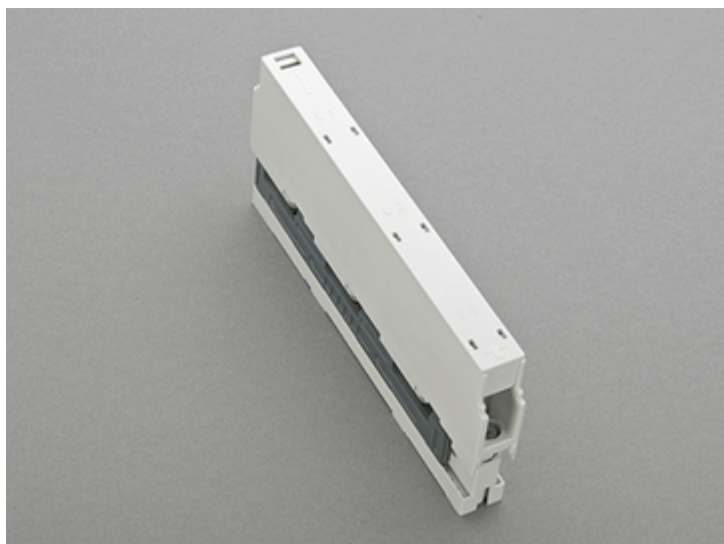


## connection busbar support (01484)



The picture may show a similar product.

### Description

Part No.: 01484

connection busbar support

3-pole, with integrated terminals 1.5 - 16 mm<sup>2</sup>

for busbars 12, 15, 20, 25, 30 x 5, 10

### System

60Classic

### Advantages of the product

Connection busbar support with integrated terminals for feeding or tapping the busbar with internal screw holes, can also be used as centre support.

**Product group** 06

**Subgroup** 09

**pack size** 10

**EAN** 4021267014841

catalog page 2020 : 3.2, 3.5

ECLASS 6.1 27400607

ECLASS 7.1 27400607

ETIM 4.0 EC001166

ETIM 5.0 EC001166

## Approvals

### Standards

IEC 61439-1:2011

### Approvals

EAC



EAC Type: SB

CCC approval: no certification required

## Technical data

### Details IEC

#### Standards

IEC 61439-1:2011

#### Electrical data IEC

Rated current (IEC): 63 A

rated voltage (IEC) AC: 690 V

rated frequency (IEC): 50 / 60 Hz

rated isolation voltage  $U_i$  AC: 800 V

rated surge voltage  $U_{imp}$  : 6 kV

power dissipation of the article:

The power dissipation at a typical load of 80 % results to 0.5 W.

(The power dissipation at full load would be 0.8 W.)

### Supplementary data IEC

The following values have been verified with tests under certain conditions. Please ask Wöhner for this conditions before designing your panel.

current capacity (IEC) max.: 80 A

Current capacity of the clamping point 80A

short-circuit withstand rating:

surge current strength > 30kA at busbar support separation of 550mm

surge current strength > 50kA at busbar support separation of 250mm

further values in the short-circuit withstand rating diagram

### Mechanical data

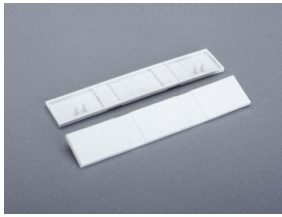
W x H x D: 20 x 202 x 87

weight: 25.6 kg/100

poles: 3-pole

for busbars: 12, 15, 20, 25, 30 x 5, 10

## Accessories



**01573**

end cover

for busbar supports 01484, 01495, 01500, 01508 and 01603