

universal busbar support (01495)



The picture may show a similar product.

Description

Part No.: 01495

universal busbar support

3-pole with internal screw holes

for busbars 12, 15, 20, 25, 30 x 5, 10

System

60Classic

Advantages of the product

With internal screw holes

can also be used as centre support

Product group 06

Subgroup 09

pack size 10

EAN 4021267014957

catalog page 2020 : 3.1

ECLASS 6.1 27400607

ECLASS 7.1 27400607

ETIM 4.0 EC001166

ETIM 5.0 EC001166

Approvals

Standards

IEC 61439-1:2011

Approvals

DNV GL, EAC



type number: S610

EAC Type: SB

CCC approval: no certification required

Technical data

Details IEC

Standards

IEC 61439-1:2011

Electrical data IEC

rated voltage (IEC) AC: 800 V

rated frequency (IEC): 50 / 60 Hz

rated isolation voltage U_i AC: 1000 V

rated surge voltage U_{imp} : 8 kV

The insulation performance of the article depends on the installation conditions.

max. permitted voltage (IEC) DC 1500 V

rated peak withstand current I_{pk} max.: 73 kA
rated short-time withstand current I_{CW} (1.0 s) max.: 35 kA

power dissipation of the article:

The power dissipation at a typical load of 80 % results to 0.0 W.

(The power dissipation at full load would be 0.0 W.)

short-circuit capacity IEC / EN :

I_{pk} max. = 73kA (busbar 30x10, 2 busbar supports in 250mm distance)

go to calculation for **3-pole system (IEC)**

Mechanical data

W x H x D: 20 x 191 x 50

weight: 12.7 kg/100

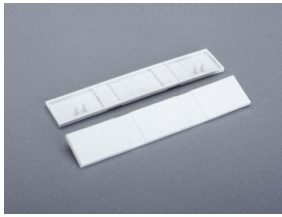
poles: 3-pole

for busbars: 12, 15, 20, 25, 30 x 5, 10

Reference

Torque for the screws of the busbar support $M_d = 4Nm$

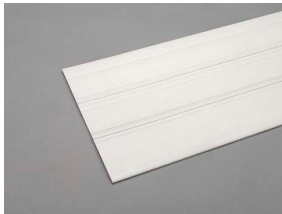
Accessories



01573

end cover

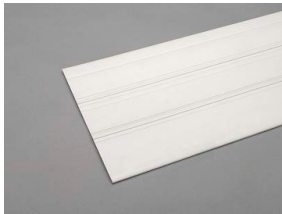
for busbar supports 01484, 01495, 01500, 01508 and 01603



01518

base plate UL

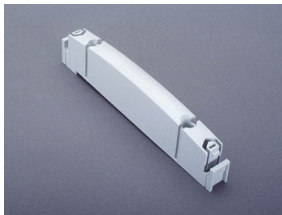
240 x 1100



01515

base plate UL

240 x 700



01017

section mount

for compartment section and trough edge section