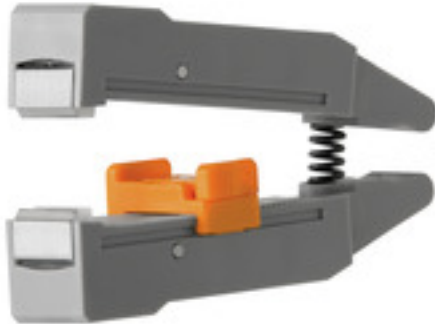


## Accessories

### ERME 10<sup>2</sup> SPX 4

**Weidmüller Interface GmbH & Co. KG**  
 Klingenbergstraße 16  
 D-32758 Detmold  
 Germany  
 Fon: +49 5231 1429-0  
 Fax: +49 5231 14292083  
 www.weidmueller.com



- Stripping tools with automatic self-adjustment
- For flexible and solid conductors
- Ideally suitable for mechanical and plant engineering, railway and rail traffic, wind energy, robot technology, explosion protection as well as marine, offshore and ship building sectors
- Stripping length adjustable via end stop
- Automatic opening of clamping jaws after stripping
- No fanning-out of individual conductors
- Adjustable to diverse insulation thicknesses
- Double-insulated cables in two process steps without special adjustment
- No play in self-adjusting cutting unit
- Long service life
- Optimised ergonomic design

#### General ordering data

Type	ERME 10 <sup>2</sup> SPX 4
Order No.	<a href="#">1119030000</a>
Version	Accessories, Cutter holder
GTIN (EAN)	4032248948420
Qty.	1 pc(s).

**Accessories**  
**ERME 10<sup>2</sup> SPX 4****Weidmüller Interface GmbH & Co. KG**  
Klingenbergstraße 16  
D-32758 Detmold  
Germany  
Fon: +49 5231 1429-0  
Fax: +49 5231 14292083  
www.weidmueller.com**Technical data****Dimensions and weights**

Net weight 25 g

**Classifications**

ETIM 3.0	EC000161	ETIM 4.0	EC000163
ETIM 5.0	EC000163	ETIM 6.0	EC001509
eClass 6.2	21-04-91-14	eClass 7.1	21-04-91-14
eClass 8.1	21-04-91-14	eClass 9.0	21-04-48-00
eClass 9.1	21-01-90-90		

**Approvals**

ROHS Conform

**Downloads**Engineering Data [WSCAD](#)