

## DOG TAGS MG-DOG

*precut, pre-drilled with one hole*

Dog tags are often loosely attached to equipment where a label cannot be fixed, eg on valves, tappings, couplers or in oil/solvent-rich atmospheres.

Consult us for availability of other colours.

Note: UV resistance may vary between colours.

The colours white PVC10050WH and yellow PVC10050YE are UL approved.



CERTIFICATES 

  2011/65/EU

LABORATORY TEST 

### CEI EN 60950-1

#### INDELIBILITY

#### Information technology equipment - Safety

*Part 1: General requirements*

*§ 1.7.11 Durability*

Compliance is checked by inspection and by rubbing the marking by hand for 15 s with a piece of cloth soaked with water and again for 15 s with a piece of cloth soaked with hexane.

After this test, the marking shall be legible; it shall not be possible to remove marking plates easily and they shall show no curling.

### CEI EN 61010-1

#### INDELIBILITY

#### Ed.2 equivalent to VDE 0411-1

#### Safety indications for electric devices for measurement, control and laboratory use

*Part 1: General indications*

This regulation requires that both material and the print shall withstand, cleaning with chemical agents commonly used in industry.

By rubbing manually by hand, without excessive pressure, for 30 seconds with a cloth soaked in the specific detergent or, if not specified, Isopropyl Alcohol.

---

## **CEMBRE STANDARD**

### **INDELIBILITY**

This test was created to simulate cleaning with chemical products commonly used on various surfaces.

By wiping with a cloth soaked in 95% Ethanol 30 times and making a visual inspection after every 10 passes.

---

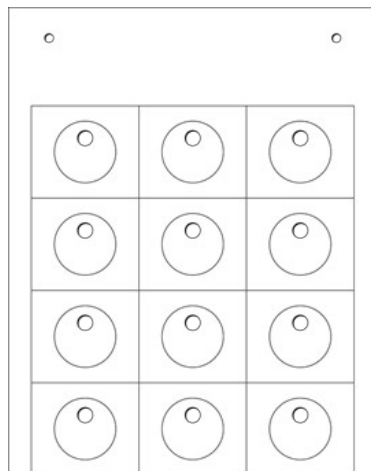
## **DIN 30643**

---

# DOG TAGS MG-DOG

## *Technical characteristics*

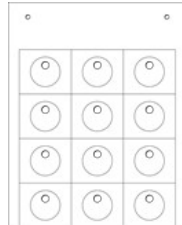
Material	Rigid PVC
UL94 class	V0
Silicon free	yes
Precut	yes
Min operating temperature range	-30 °C
Max operating temperature range	60 °C



## DOG TAGS MG-DOG

### List of products

#### MG-DOG



Type	Geometric shape	Colour	Diameter of the hole	Height	Length	Diameter	Quantity per sheet	Pack qty	SWcode
48203	square with square corners	White	5 mm	20 mm	20 mm		25	1,250	867
48204	rectangular with square corners	White	5 mm	25 mm	50 mm		8	400	868
48244	rectangular with square corners	Yellow	5 mm	25 mm	50 mm		8	400	868
48392	circular	White	6.5 mm			20 mm	12	300	875
48342	circular	Yellow	6.5 mm			20 mm	12	300	875
48322	circular	Red	6.5 mm			20 mm	12	300	875
48352	circular	Green	6.5 mm			20 mm	12	300	875
48391	circular	White	5 mm			20 mm	12	300	874
48341	circular	Yellow	5 mm			20 mm	12	300	874
48300	circular	White	4 mm			35 mm	6	300	870
48340	circular	Yellow	4 mm			35 mm	6	300	870
48320	circular	Red	4 mm			35 mm	6	300	870
48380	circular	Green	4 mm			35 mm	6	300	870