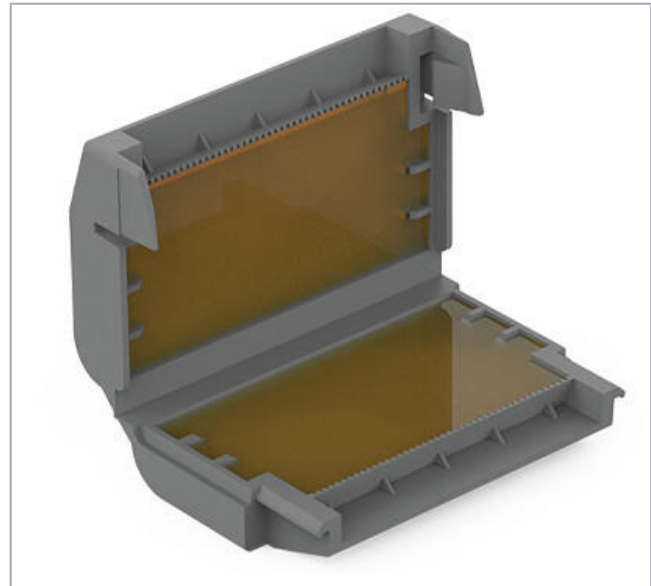


## Data sheet | Item number: 207-1333

Gelbox; for cables; Branch; with gel; 221, 2273 Series; without splicing connectors; Type 3; gray

[www.wago.com/207-1333](http://www.wago.com/207-1333)



### Item description

Please note the system description for the splicing connectors that can be used.

The Benefits for You:

- Easy, fast and safe to use
- Can be used immediately and accessed again later
- Silicon-free
- Label-free
- Suitable for indefinite storage
- The complete system consisting of Gelboxes and WAGO connectors has been VDE-tested and IPX8-certified.

Subject to changes. Please also observe the further product documentation!

WAGO Kontakttechnik GmbH & Co. KG  
Hansastr. 27  
32423 Minden  
Phone: +49571 887-0 | Fax: +49571 887-169  
Email: [info.de@wago.com](mailto:info.de@wago.com) | Web: [www.wago.com](http://www.wago.com)

Do you have any questions about our products?  
We are always happy to take your call at 01788 568 008.



## Data

### Connection data

Actuation type	Verrastung
----------------	------------

### Physical data

Width	33.6 mm / 1.323 inch
Height	17.8 mm / 0.701 inch
Depth	52.7 mm / 2.075 inch

### Mechanical data

Mounting type	Fliegende Verbindung
Protection type	IPx8 (2m/2h) gemäß 60529

### Material Data

Color	gray
Housing material	Polypropylen
Weight	21 g

### Environmental Requirements

Surrounding air temperature (operation)	-55 ... 85 °C
Surrounding air temperature (storage)	0 ... 40 °C

### Commercial data

Packaging type	BOX
Country of origin	IT
GTIN	4055143997805
Customs tariff number	85389099990

## Approvals / Certificates

### Country specific Approvals

Logo	Approval	Additional Approval Text	Certificate name
	VDE VDE Prüf- und Zertifizierungsinstitut	EN 60998	400051938

Subject to changes. Please also observe the further product documentation!



## Counterpart

## Downloads Documentation

### Additional Information

Technical explanations	03-Apr-2019	pdf 2.1 MB	Download
------------------------	-------------	---------------	----------

### System Description

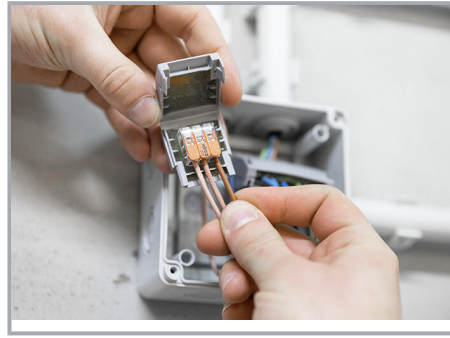
System Description 207 Series Gel boxes	31-Jul-2020	pdf 1.1 MB	Download
---	-------------	---------------	----------

## Installation Notes

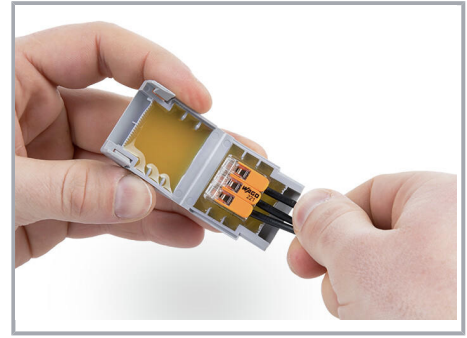
### Installation



Gelbox öffnen.

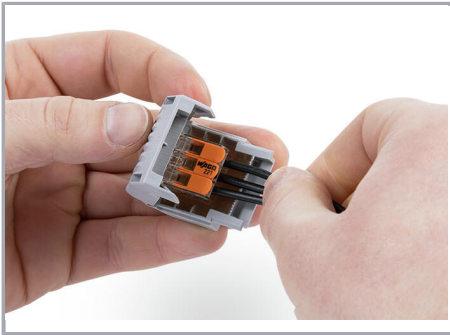


Verdrahtete Klemme in die Gelbox einlegen.

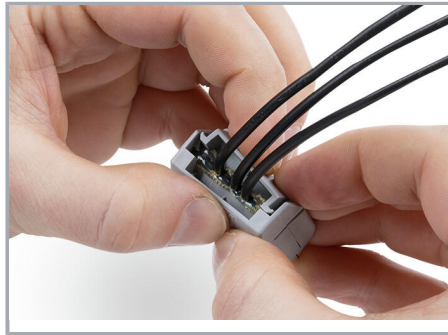


Verdrahtete Klemme in die Gelbox einlegen.

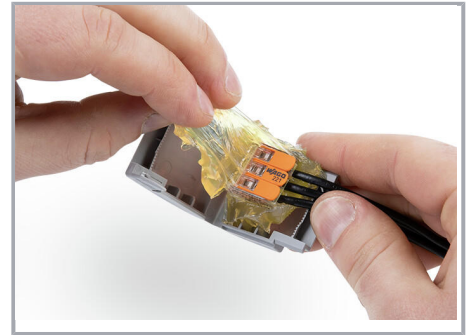
Subject to changes. Please also observe the further product documentation!



Gelbox schließen.



Verrastung sicher verschließen.



Wiederzugänglich:

- Gelbox öffnen
- Gel entfernen
- Umverdrahten mit neuen Komponenten

Subject to changes. Please also observe the further product documentation!