

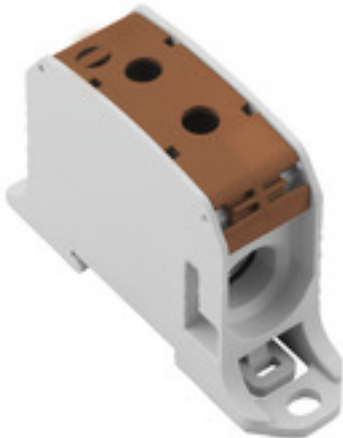
**WPD 131 1X95/1X95 BN****Weidmüller Interface GmbH & Co. KG**

Klingenbergstraße 26

D-32758 Detmold

Germany

www.weidmueller.com

**Product image****Power feed-in**

Our wide range of W-Series terminal blocks with our WPD main line branch terminals, which are optimised to guarantee both convenience and space gains, ensures a secure and convenient connection at the power feed-in.

**General ordering data**

Version	W-Series, Distribution block, Rated cross-section: 95 mm <sup>2</sup> , Terminal rail / mounting plate
Order No.	<a href="#">2502680000</a>
Type	WPD 131 1X95/1X95 BN
GTIN (EAN)	4050118516500
Qty.	2 pc(s).

Creation date March 17, 2021 9:38:29 AM CET

Catalogue status 12.03.2021 / We reserve the right to make technical changes.

## WPD 131 1X95/1X95 BN

Weidmüller Interface GmbH &amp; Co. KG

Klingenbergstraße 26

D-32758 Detmold

Germany

www.weidmueller.com

## Technical data

## Dimensions and weights

Depth	57 mm	Depth (inches)	2.244 inch
Height	93 mm	Height (inches)	3.661 inch
Net weight	96 g	Width	28 mm
Width (inches)	1.102 inch		

## Temperatures

Storage temperature	-25 °C...55 °C	Continuous operating temp., min.	-50 °C
Continuous operating temp., max.	120 °C		

## Material data

Material	Wemid	Colour	brown
UL 94 flammability rating	V-0		

## Rating data IECEx/ATEX

Certificate No. (ATEX)	CNEX18ATEX0016U	Certificate No. (IECEX)	IECEXNEX18.0010U
Max. voltage (ATEX)	880 V	Current (ATEX)	232 A
Wire cross section max. (ATEX)	95 mm <sup>2</sup>	Max. voltage (IECEX)	880 V
Current (IECEX)	232 A		

## System specifications

Version	Screw connection	End cover plate required	No
Number of potentials	1	Number of levels	1
Number of clamping points per level	2	Levels cross-connected internally	No

## Additional technical data

Installation advice	Terminal rail / mounting plate	Type of mounting	Snap-on
---------------------	--------------------------------	------------------	---------

## General

Installation advice	Terminal rail / mounting plate	Number of poles	1
Standards	IEC 60947-7-1, UL 1059, CSA		

## Rating data

Power loss in accordance with IEC 60947-7-x	7.42 W	Rated cross-section	95 mm <sup>2</sup>
Rated voltage	1,000	Rated AC voltage	1,000 V
Rated DC voltage	1,000 V DC	Rated current	155 A
Standards	IEC 60947-7-1, UL 1059, CSA	Volume resistance according to IEC 60947-7-x	0.14 mΩ
Rated impulse withstand voltage	8 kV	Pollution severity	3
Surge voltage category	III		

## UL rating data

Certificate No. (cURus)	E60693
-------------------------	--------

Creation date March 17, 2021 9:38:29 AM CET

Catalogue status 12.03.2021 / We reserve the right to make technical changes.

2

## WPD 131 1X95/1X95 BN

**Weidmüller Interface GmbH & Co. KG**  
 Klingenbergstraße 26  
 D-32758 Detmold  
 Germany

www.weidmueller.com

## Technical data

### Classifications

ETIM 6.0	EC000897	ETIM 7.0	EC000897
ECLASS 9.0	27-14-11-20	ECLASS 9.1	27-14-11-20
ECLASS 10.0	27-14-11-20	ECLASS 11.0	27-14-11-20

### Important note

Product information You will find additional information in the downloadsection of the onlinecatalogue

### Approvals

Approvals



ROHS	Conform
UL File Number Search	E60693

### Downloads

Approval/Certificate/Document of Conformity	<a href="#">CB Certificate</a> <a href="#">FIMKO certificate</a> <a href="#">EAC EX Certificate</a> <a href="#">CCC Ex Certificate</a> <a href="#">CE declaration</a>
Engineering Data	<a href="#">STEP</a>
Engineering Data	<a href="#">EPLAN</a>
User Documentation	<a href="#">DATA SHEET WPD 131</a> <a href="#">StorageConditionsTerminalBlocks</a> <a href="#">NTI WPD 131</a>

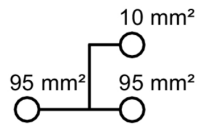
**Data sheet**

**WPD 131 1X95/1X95 BN**

**Weidmüller Interface GmbH & Co. KG**  
Klingenbergstraße 26  
D-32758 Detmold  
Germany

[www.weidmueller.com](http://www.weidmueller.com)

**Drawings**



## Technical data

### Inputs

Number of connections

Solid

Stranded

Flexible with ferrule

Ribbon cable

Torque

Clamping screw

Stripping length

### Outputs

Number of connections

Solid

Stranded

Flexible with ferrule

Torque

Clamping screw

Stripping length

Poles

### Note

IEC 60947-7-1, UL 1059, CSA

top	mid./left	mid./mid.	mid./right	bottom
		1		
		16...16mm <sup>2</sup>		
		16...95mm <sup>2</sup>		
		10...70mm <sup>2</sup>		
		19Nm		
		M 14		
		26mm		
top	mid./left	mid./mid.	mid./right	bottom
1		1		
1.5...10mm <sup>2</sup>		16...16mm <sup>2</sup>		
1.5...10mm <sup>2</sup>		16...95mm <sup>2</sup>		
1.5...6mm <sup>2</sup>		10...70mm <sup>2</sup>		
1.2Nm		19Nm		
M 4		M 14		
10mm		26mm		
1				

Rated current with Cu conductors: 232 A