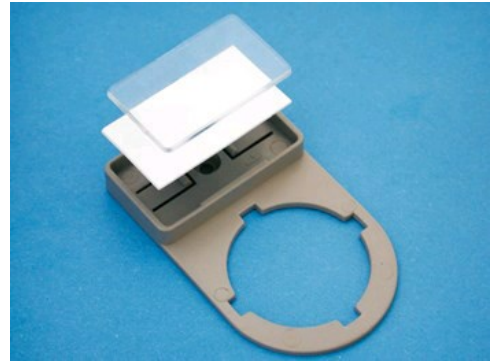


PUSH BUTTON LEGEND BASES PTPSA-24

for Telemecanique, self adhesive 15x27mm

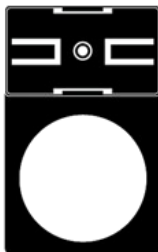
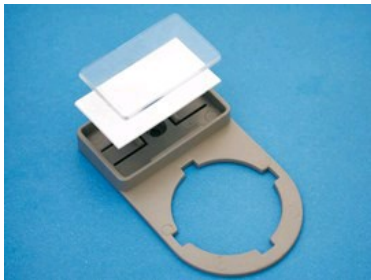
Ø 22.5mm push button legend bases to fit a wide range of popular brands. Type PTO without locators may offer a higher level of ingress protection depending upon installation method. All types have a hole behind the legend for rivet fixing, while PT...A types are adhesive backed. All types can be fitted with a transparent legend cover TAP-CCS 990521 or MG-TAP-CCS 990510



PUSH BUTTON LEGEND BASES PTPSA-24

Technical characteristics

Min operating temperature range	-40 °C
Max operating temperature range	115 °C
Min operating temperature range (surge)	-40 °C
Max operating temperature range (surge)	130 °C
UL94 class	V0



PUSH BUTTON LEGEND BASES PTPSA-24

List of products

PTPSA-24			
Type	Pack qty	Colour	Adhesive
PTPSA-24 68602	100	Black	yes