

Data sheet | Item number: 209-190

Separator for Ex e/Ex i applications; 3 mm thick; 90 mm wide; orange

www.wago.com/209-190



Data

Physical data

Width	3 mm / 0.118 inch
Height	90 mm / 3.543 inch
Depth from upper edge of DIN-rail	52 mm / 2.047 inch

Material data

Color	orange
Flammability class per UL94	V0
Fire load	0.296 MJ
Weight	9.5 g

Commercial data

Product Group	2 (Terminal Block Accessories)
PU (SPU)	50 (25) Stück
Packaging type	box
Country of origin	DE

Subject to changes. Please also observe the further product documentation!

WAGO Kontakttechnik GmbH & Co. KG
Hansastr. 27
32423 Minden
Phone: +49571 887-0 | Fax: +49571 887-169
Email: info.de@wago.com | Web: www.wago.com

Do you have any questions about our products?
We are always happy to take your call at 01788 568 008.



GTIN	4017332241311
Customs tariff number	85389099990

Downloads Documentation

Bid Text

209-190 doc - Datei	Jan 4, 2018	doc 24.1 kB	Download
209-190 X81 - Datei	Feb 19, 2019	xml 2.6 kB	Download

Additional Information

Technical explanations	Apr 3, 2019	pdf 2.2 MB	Download
------------------------	-------------	---------------	----------

CAD/CAE-Data

CAD data

2D/3D Models 209-190	URL	Download
----------------------	-----	----------

CAE data

ZUKEN Portal 209-190	URL	Download
EPLAN Data Portal 209-190	URL	Download
WSCAD Universe 209-190	URL	Download

Environmental Product Compliance

Compliance Search

Environmental Product Compliance 209-190 Separator for Ex e/Ex i applications; 3 mm thick; 90 mm wide; orange	URL	Download
--	-----	----------

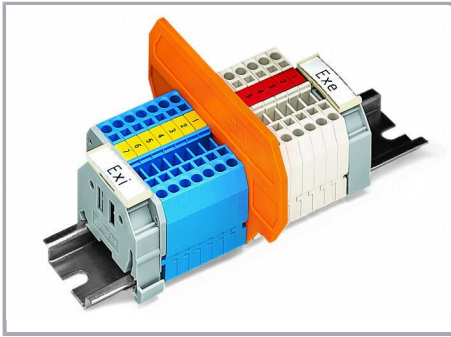
Installation Notes

Ex application

Subject to changes. Please also observe the further product documentation!

WAGO Kontakttechnik GmbH & Co. KG
Hansastr. 27
32423 Minden
Phone: +49571 887-0 | Fax: +49571 887-169
Email: info.de@wago.com | Web: www.wago.com

Do you have any questions about our products?
We are always happy to take your call at 01788 568 008.



Separator plate for Ex e/Ex i applications

According to EN 50020, a minimum distance of 50 mm must be kept between live parts of Ex e and Ex i circuits. The use of Ex e/Ex i separators is a space-saving solution when Ex e and Ex i terminal blocks are mounted on a common DIN-rail.

For 279 ... 282 Series:

209-190 for 2-conductor terminal blocks

209-191 for 2-, 3-, 4-conductor terminal blocks

Ex application

Subject to changes. Please also observe the further product documentation!



A separator plate is located between the Ex e II and Ex i terminal strip.

End plate

Ex e II terminal blocks

Separator plate for Ex e/Ex i applications

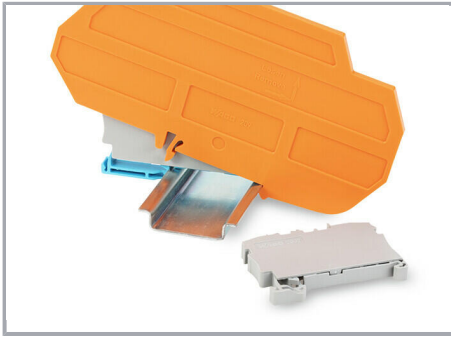
End plate

Ex i terminal blocks

According to EN 50020, a minimum distance of 50 mm must be kept between live parts of Ex e and Ex i circuits. The use of Ex e/Ex i separators is a space-saving solution when Ex e and Ex i terminal blocks are mounted on a common DIN-rail.

Safety

Subject to changes. Please also observe the further product documentation!



Ex e II/Ex i terminal strip

Note:

The movable feet of terminal blocks and separator plates must face the same direction.

Subject to changes. Please also observe the further product documentation!