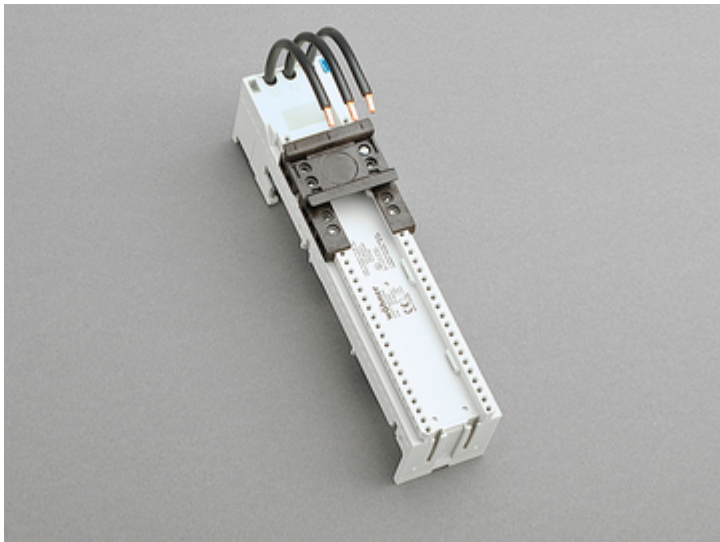


busbar adapter 32 A (32655)



Description

Article

Part No.: 32655

EQUES[®] 60Classic

busbar adapter 32 A

1 adjustable mounting rail

45 x 200, with leads AWG 10 (6 mm²)

for busbars 12, 15, 20, 25, 30 x 5, 10 and section busbars

System

60Classic

Product group 05

Subgroup 21

pack size 4

EAN 4021267326555

Advantages of the product

Conductor ends ultrasonically sealed.

Click mechanism when pushing onto the busbar.

Catalog page 2018 : 3.11

eCl@ss 6.1 27370304

27370304

ETIM 4.0 EC001531

ETIM 5.0 EC001531

Approvals

Standards

IEC 61439-1:2011

Approvals

CSA , UL , Germanischer Lloyd



for UL feeder circuits >250V

Type number: EEC6025-L

UL file: E123577, UL category (for USA): NMTR <http://www.ul.com>

UL file: E123577, UL category (for Canada): NMTR7 <http://www.ul.com>

CSA file: 110285, CSA class: 3211-37 <http://directories.csa-international.org>

CCC approval: no certification required

Product data

Electrical data

Rated current (IEC): 32 A

Rated voltage (IEC) AC: 690
V

Rated current (UL): 25 A

Rated voltage (UL) AC: 600
V

Power dissipation:

The power dissipation at a typical load of 80% of the rated current results to 1.6 W.

(The power dissipation for operation with rated current would be 2.5 W.)

rated isolation voltage U_i :	800
	V
Rated surge voltage U_{imp} :	6 kV
max. permitted voltage (IEC) AC:	800
	V
max. permitted voltage (IEC) DC:	800
	V

short-circuit withstandability:	the short-circuit capacity of the combination of adapter and motor starter depends on the motor starter
SCCR:	30kA @ Comb. Mtr. Cntlr. NKJH 12,5A, 600Vac 50kA @ Comb. Mtr. Cntlr. NKJH 32A, 480Vac 65kA @ Comb. Mtr. Cntlr. NKJH 16A, 480Vac 65kA @ Comb. Mtr. Cntlr. NKJH 25A, 480Vac

Mechanical data

W x H x D: 45 x 200 x 63
weight: 33.3 kg/100
poles: 3-pole
for busbars: 12, 15, 20, 25, 30 x 5, 10 and section busbars

Material properties

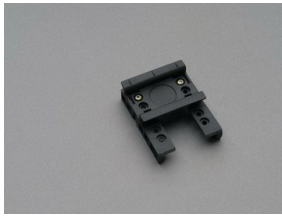
Body: temperature stability 125°C,
self-extinguishing in acc. to UL 94,
creepage resistance CTI 600,
halogen-free
DIN rail: temperature stability 125°C,
self-extinguishing in acc. to UL 94,
creepage resistance CTI 550,
halogen-free
Screws: screw +/- (PZ1), galvanized, chromized

Conductor insulation: temperature-resistant up to 105 °C

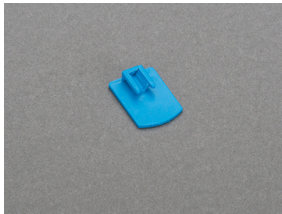
Reference

For compact mounting of complete motor circuits with commercially available switchgear and safe mechanical and electrical connection to the busbar system.

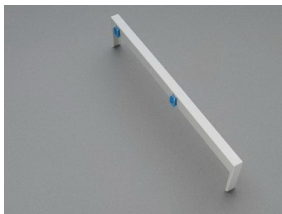
Accessories



32947
mounting rail 45 mm
for busbar adapters



32969
mounting rail end stop



32963
side-mounted module for busbar adapters
attachable to both sides
9 x 200