



Main

Range of product	Modicon M221
Product or component type	Graphic display
Range compatibility	Modicon M221
Current consumption	40 mA at 5 V DC via RJ45 connector
Power consumption	<= 1 W
Display type	Backlit colour STN LCD
Display colour	Monochrome
Display resolution	240 x 160 pixels
Number of key	6 (for navigation) 4 (configurable)

Complementary

Standards	EN/IEC 61131-2 EN/IEC 61010-2-201
Product certifications	CULus
Marking	CE
Mounting location	Bottom of cabinet Ø 22 mm hole, connection via mounting accessory Front cabinet Ø 22 mm hole
Type of connector	RJ45 for communication and power supply
Provided equipment	Cable 2.5 m
Height	126 mm
Width	80 mm
Depth	63 mm
Product weight	0.17 kg

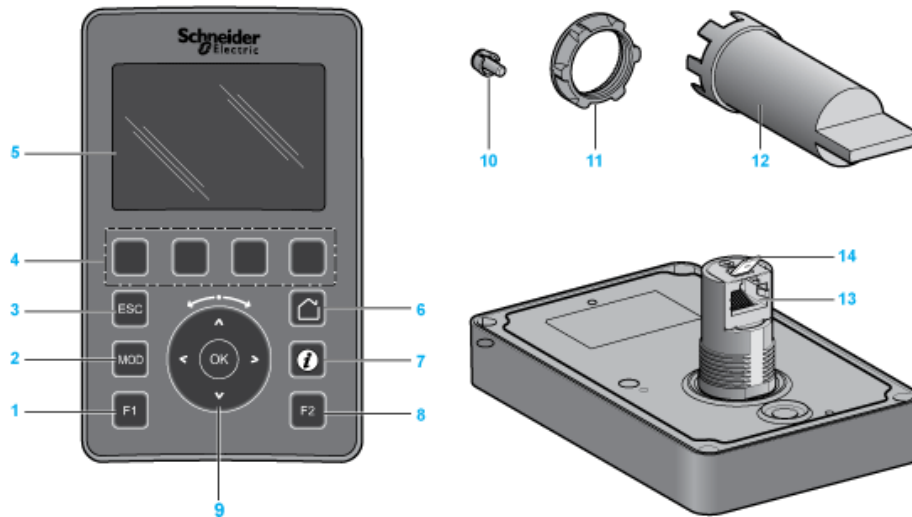
Environment

Ambient air temperature for operation	-15...50 °C
Operating altitude	0...2000 m
Storage altitude	0...2000 m
Environmental characteristic	Corrosive gas free
Relative humidity	95 % non-condensing for operation 95 % non-condensing for storage 95 % non-condensing for transport
Ambient air temperature for storage	-40...70 °C
IP degree of protection	IP20 on back part IP65 on front face
Pollution degree	2 conforming to EN/IEC 60664-1
Vibration resistance	2 gn 1.5 mm (f = 3...150 Hz)

Shock resistance	15 gn for 11 ms
Electromagnetic compatibility	<p>Disturbing field emission test level: 47 dBμV/m QP - class A - 10 m conforming to EN/IEC 55011</p> <p>Disturbing field emission test level: 40 dBμV/m QP - class A - 10 m conforming to EN/IEC 55011</p> <p>Disturbing field emission test level: 63 dBμV/m QP - power lines (DC) conforming to EN/IEC 55011</p> <p>Disturbing field emission test level: 79...63 dBμV/m QP - power lines (DC) conforming to EN/IEC 55011</p> <p>Disturbing field emission test level: 230 MHz...1 GHz - class A - 10 m conforming to EN/IEC 55011</p> <p>Disturbing field emission test level: 30...230 MHz - class A - 10 m conforming to EN/IEC 55011</p> <p>Disturbing field emission test level: 1.5...30 kHz - power lines (DC) conforming to EN/IEC 55011</p> <p>Disturbing field emission test level: 150...1500 kHz - power lines (DC) conforming to EN/IEC 55011</p> <p>Disturbing field emission test level: 120...69 dBμV/m QP - power lines (DC) conforming to EN/IEC 55011</p> <p>Disturbing field emission test level: 10...150 kHz - power lines (DC) conforming to EN/IEC 55011</p> <p>Conducted RF disturbances test level: 10 Vrms - 0.15...80 MHz conforming to EN/IEC 61000-4-6</p> <p>Surge immunity test test level: 0.5 kV - differential mode conforming to EN/IEC 61000-4-5</p> <p>Surge immunity test test level: 0.5 kV - common mode conforming to EN/IEC 61000-4-5</p> <p>Electrical fast transient/burst immunity test test level: 1 kV conforming to EN/IEC 61000-4-4</p> <p>Magnetic field at power frequency test level: 30 A/m - 50/60 Hz conforming to EN/IEC 61000-4-8</p> <p>Radiated radio-frequency electromagnetic field immunity test test level: 1 V/m - 2...3 GHz conforming to EN/IEC 61000-4-3</p> <p>Radiated radio-frequency electromagnetic field immunity test test level: 3 V/m - 1.4...2 GHz conforming to EN/IEC 61000-4-3</p> <p>Radiated radio-frequency electromagnetic field immunity test test level: 10 V/m - 80 MHz...1 GHz conforming to EN/IEC 61000-4-3</p> <p>Electrostatic discharge test level: 4 kV - contact discharge conforming to EN/IEC 61000-4-2</p> <p>Electrostatic discharge test level: 8 kV - air discharge conforming to EN/IEC 61000-4-2</p>

Remote Graphic Display

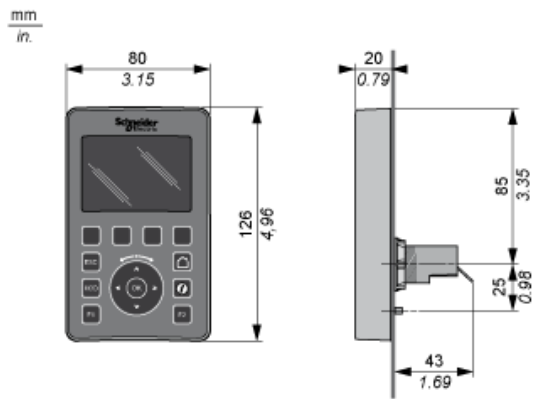
Overview



- 1 : F1 key
- 2 : MOD key
- 3 : ESC key
- 4 : R1 to R4 keys
- 5 : Graphic screen
- 6 : Home key
- 7 : Information key
- 8 : F2 key
- 9 : Touch wheel/OK/Arrows
- 10 : Anti-rotation tee
- 11 : Installation nut
- 12 : Socket wrench (ZB5AZ905)
- 13 : RJ45 serial line (RS-485)
- 14 : Connector for functional ground (earth)

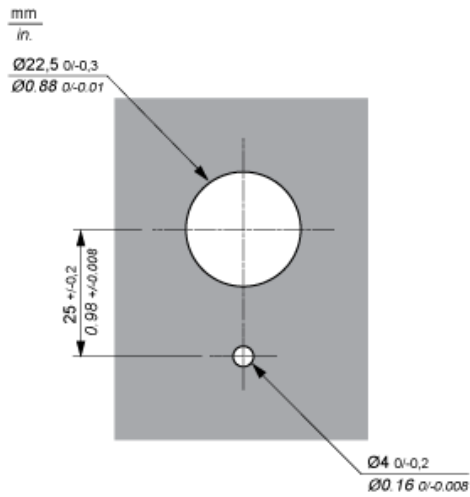
Remote Graphic Display

Dimensions



Mounting and Clearances

Mounting Hole Layout



Minimum Clearances

