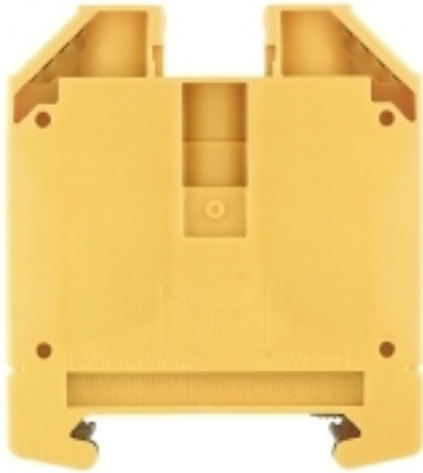


W-Series
WPE 35

Weidmüller Interface GmbH & Co. KG
 Klingenbergstraße 16
 D-32758 Detmold
 Germany
 Fon: +49 5231 1429-0
 Fax: +49 5231 14292083
 www.weidmueller.com


Klippon® Connect with clamping yoke Technology

The high reliability and variety of designs of the terminal blocks with clamping yoke connections make planning easier and optimises operational safety. Klippon® Connect provides a proven response to a range of different requirements.

General ordering data

Type	WPE 35
Order No.	1010500000
Version	PE terminal, Screw connection, 35 mm ² , 4200 A (35 mm ²), green / yellow
GTIN (EAN)	4008190112806
Qty.	25 pc(s).

W-Series
WPE 35

Weidmüller Interface GmbH & Co. KG
 Klingenbergstraße 16
 D-32758 Detmold
 Germany
 Fon: +49 5231 1429-0
 Fax: +49 5231 14292083
 www.weidmueller.com

Technical data**Dimensions and weights**

Width	16 mm	Width (inches)	0.63 inch
Height	56 mm	Height (inches)	2.205 inch
Depth	62.5 mm	Depth (inches)	2.461 inch
Depth including DIN rail	63 mm	Weight	82.84 g
Net weight	80.2 g		

Temperatures

Continuous operating temp., min.	-60 °C	Continuous operating temp., max.	130 °C
----------------------------------	--------	----------------------------------	--------

Material data

Material	Wemid	Colour	green / yellow
UL 94 flammability rating	V-0		

Rating data IECEx/ATEX

Certificate No. (ATEX)	DEMKO14ATEX1338U	ATEX certificate	ACF-ATEX_4786180920.pdf
Certificate No. (IECEX)	IECEXULD14.0005U	IEC Ex certificate	IECEXULD14.0005U_e.pdf
Wire cross section max. (ATEX)	35 mm ²	Wire cross section max. (IECEX)	35 mm ²
Operating temperature range	For operating temperature range see EC Design Test Certificate / IEC Ex-Certificate of Conformity	Marking EN 60079-7	Ex e II
Ex 2014/34/EU label	II 2 G D		

System specifications

Version	Screw connection, With PE connection, closed	End cover plate required	No
Number of potentials	1	Number of levels	1
No. of clamping points per level	2	Number of potentials per tier	1
Levels cross-connected internally	No	PE connection	Yes
Mounting rail	TS 35	N-function	No
PE function	Yes	PEN function	Yes

Additional technical data

Explosion-tested version	Yes	Installation advice	Screwed
Interlock	for screw fixing	Number of similar terminals	1
Open sides	closed	Type of mounting	Screwed

CSA rating data

Certificate No. (CSA)	200039-1057876	Wire cross section max. (CSA)	2 AWG
Wire cross section min. (CSA)	12 AWG		

W-Series
WPE 35

Weidmüller Interface GmbH & Co. KG
 Klingenbergstraße 16
 D-32758 Detmold
 Germany
 Fon: +49 5231 1429-0
 Fax: +49 5231 14292083
 www.weidmueller.com

Technical data**Conductors for clamping (rated connection)**

Blade size	6.5 x 1.2 mm	Clamping range, rated connection, max.	35 mm ²
Clamping range, rated connection, min.	2.5 mm ²	Clamping screw	M 6
Connection direction	on side	Cross-section for connected conductor, finely stranded with wire-end ferrules and plastic collars DIN 46228/4, rated connection, min.	2.5 mm ²
Gauge to IEC 60947-1	B8	Number of connections	2
Stripping length	18 mm	Tightening torque, min.	5 Nm
Type of connection	Screw connection	Wire connection cross section AWG, max.	AWG 2
Wire connection cross section AWG, min.	AWG 12	Wire connection cross section, finely stranded with wire-end ferrules DIN 46228/1, rated connection, max.	35 mm ²
Wire connection cross section, finely stranded with wire-end ferrules DIN 46228/1, rated connection, min.	2.5 mm ²	Wire connection cross section, finely stranded, max.	35 mm ²
Wire connection cross section, solid core max. rated connection	16 mm ²	Wire connection cross section, solid core, min. rated connection	2.5 mm ²
Wire connection cross section, stranded, rated connection, max.	35 mm ²	Wire connection cross section, stranded, rated connection, min.	2.5 mm ²
Wire connection cross-section, finely stranded with wire-end ferrules and plastic collars DIN 46228/4, rated connection, max.	35 mm ²	Wire connection cross-section, finely stranded, min.	2.5 mm ²

Dimensions

TS 35 offset	32 mm
--------------	-------

PE rating data

Rated short-time current	4200 A (35 mm ²)	Centre screw on PE terminals	M 4
Tightening torque range for fixing screw	1.2...2.4 Nm	PEN function	Yes

Rating data

Rated cross-section	35 mm ²	Rated voltage to adjoining terminal	800 V
Standards	IEC 60947-7-2	Volume resistance according to IEC 60947-7-x	0.26 mΩ
Rated impulse withstand voltage to adjacent terminal	8 kV	Pollution severity	3

UL rating data

Certificate No. (UR)	E60693	Conductor size Factory wiring max. (UR)	2 AWG
Conductor size Factory wiring min. (UR)	12 AWG	Conductor size Field wiring max. (UR)	2 AWG
Conductor size Field wiring min. (UR)	12 AWG		

Classifications

ETIM 3.0	EC000901	ETIM 4.0	EC000491
ETIM 5.0	EC000491	ETIM 6.0	EC000901
UNSPSC	30-21-18-11	eClass 5.1	27-14-03-05
eClass 6.2	27-14-03-05	eClass 7.1	27-14-03-05
eClass 8.1	27-14-11-41	eClass 9.0	27-14-11-41
eClass 9.1	27-14-11-41		

Creation date July 11, 2017 5:11:43 PM CEST

Data sheet

**W-Series
WPE 35**

Weidmüller Interface GmbH & Co. KG
 Klingenbergstraße 16
 D-32758 Detmold
 Germany
 Fon: +49 5231 1429-0
 Fax: +49 5231 14292083
 www.weidmueller.com

Technical data

Product information

Descriptive text accessories Rail support protective insulation for installation of mounting rail "SH 2" order No. 0494920000 (QTY 10).

Approvals

Approvals



ROHS Conform

Downloads

Approval/Certificate/Document of Conformity	CFAT_WPE 35.pdf IECEXULD14.0005U_e.pdf DE_PT1002_20160414_256_ISSUE01.pdf ACF-ATEX_4786180920
Engineering Data	EPLAN, WSCAD, Zuken E3.S
User Documentation	NTI_IECEX_WDU-WPE 35.pdf

Safety note

Safety notice [Safety Information](#)

Data sheet

W-Series
WPE 35

Weidmüller Interface GmbH & Co. KG
Klingenbergstraße 16
D-32758 Detmold
Germany
Fon: +49 5231 1429-0
Fax: +49 5231 14292083
www.weidmueller.com

Drawings

