

## ACT20M ACT20M-UI-AO-S

**Weidmüller Interface GmbH & Co. KG**  
 Klingenbergstraße 16  
 D-32758 Detmold  
 Germany  
 Fon: +49 5231 14-0  
 Fax: +49 5231 14-292083  
 www.weidmueller.com



### ACT20M: The slim solution

- Safe and space-saving (6 mm) isolation and conversion
- Quick installation of the power supply unit using the CH20M mounting rail bus
- Easy configuration via DIP switch or FDT/DTM software
- Extensive approvals such as ATEX, IECEx, GL, DNV
- High interference resistance

### General ordering data

Type	ACT20M-UI-AO-S
Order No.	<a href="#">1176030000</a>
Version	Signal converter/insulator, Temperature converter, All-purpose, 2-/3-/4- wire RTD, Thermocouple, Input : universal U, I, R,9, Output : I / U
GTIN (EAN)	4032248970070
Qty.	1 pc(s).

**ACT20M**  
**ACT20M-UI-AO-S**

**Weidmüller Interface GmbH & Co. KG**  
 Klingenbergstraße 16  
 D-32758 Detmold  
 Germany  
 Fon: +49 5231 14-0  
 Fax: +49 5231 14-292083  
 www.weidmueller.com

**Technical data**
**Dimensions and weights**

Width	6.1 mm	Width (inches)	0.24 inch
Height	112.5 mm	Height (inches)	4.429 inch
Depth	114.3 mm	Depth (inches)	4.5 inch
Net weight	80 g		

**Temperatures**

Humidity	40 °C / 93 % rel. humidity, no condensation	Operating temperature	-25 °C...70 °C
Ambient temperature	-25 °C...+70 °C	Storage temperature	-40 °C...85 °C

**Probability of failure**

MTBF	176 Years
------	-----------

**Input**

Number of inputs	1	Sensor	Thermocouples: B / C / E / J / K / L / N / R / S / T / W3 / W5 - 200...+ 2300 °C depending on thermocouple, RTD: PT10, PT20, PT50, PT100, PT250, PT300, PT400, PT500, PT1000, Ni50, Ni100, Ni120, Ni1000, 2-/3-/4-wire
Sensor supply	> 15 V DC at 20 mA	Input voltage	configurable, 0(2)...10 V, 0(1)...5 V, 0...1 V DC, 0,2...1 V DC
Input resistance, voltage	> 10 MΩ	Input current	configurable, 0...20 mA, 4...20mA
Voltage drop, current input	< 3 V	Temperature input range	Configurable, min. measurement range 10°C (RTD), min. measurement range 50°C (TC), PT100: -200°C...850 °C, NI100: -60°C...+250 °C, TC type: B (0...+1820 °C), E: (-100...+1000 °C), J: (-100...+1200 °C), K: (-180...+1372 °C), L: (-200...+900 °C), N: (-180...+1300 °C), R: (-50...+1760 °C), S: (-50...+1760 °C), T: (-200...+400 °C), U: (-200...+600 °C), W3: (0...+2300 °C), W5: (0...+2300 °C), LR: (-200...+800 °C)
Resistance	0...10 kΩ	Potentiometer	10...100 kΩ

**ACT20M  
ACT20M-UI-AO-S**

**Weidmüller Interface GmbH & Co. KG**  
 Klingenbergstraße 16  
 D-32758 Detmold  
 Germany  
 Fon: +49 5231 14-0  
 Fax: +49 5231 14-292083  
 www.weidmueller.com

**Technical data**
**Output**

Number of outputs	1	Output voltage, note	configurable, 0(2)...10 V, 0(1)...5 V, 0(0,2)...1 V, 1...(0,2)0 V, 5...(1)0 V, 10...(2)0 V, downscale (0 V), upscale (11 V), in case of sensor error
Output current	configurable, 0...20 mA, 4...20 mA, 20...0 mA, 20...4 mA, downscale (3,5 mA), upscale (23 mA), in case of sensor error	Cut-off frequency (-3 dB)	100 Hz
cold junction compensation	internal	load impedance voltage	≥ 10 kΩ
load impedance current	≤ 600 Ω, @ max 28mA		

**General data**

Accuracy	< 0.1 % of measuring range	Configuration	With FDT/DTM software
Galvanic isolation	3-way isolator	Mounting rail	TS 35
Power consumption, max.	1.2 W	Power consumption, typ.	0.84 W
Step response time	400 ms (10...90%) @ U/I, 1 s @ temp	Supply voltage	24 V DC ± 30 %
Temperature coefficient	≤ 0.01 % / °C		

**Insulation coordination**

EMC standards	IEC 61326-1, NE 21	Galvanic isolation	3-way isolator
Insulation voltage	2.5 kV <sub>eff</sub> / 1 min.	Pollution severity	2
Rated voltage	300 V <sub>eff</sub>	Standards	IEC 61010-1
Surge voltage category	II		

**Data for Ex applications (ATEX)**

Marking	II 3 G Ex nA IIC T4 Gc
---------	------------------------

**Connection data**

Type of connection	Screw connection	Tightening torque, min.	0.4 Nm
Tightening torque, max.	0.6 Nm	Clamping range, rated connection	2.5 mm <sup>2</sup>
Clamping range, min.	0.5 mm <sup>2</sup>	Clamping range, max.	2.5 mm <sup>2</sup>
Wire connection cross section AWG, min.	AWG 30	Wire connection cross section AWG, max.	AWG 14

**Rated data UL**

UL certificate	E337701.pdf
----------------	-------------

**Ratings IECEx/ATEX/cUL**

Certificate No. (ATEX)	KEMA10ATEX0183X	Certificate No. (IECEX)	IECEXKEM10.0090X
------------------------	-----------------	-------------------------	------------------

**ACT20M  
ACT20M-UI-AO-S**

**Weidmüller Interface GmbH & Co. KG**  
Klingenbergstraße 16  
D-32758 Detmold  
Germany  
Fon: +49 5231 14-0  
Fax: +49 5231 14-292083  
www.weidmueller.com

**Technical data**

**Classifications**

ETIM 3.0	EC002479	ETIM 4.0	EC002653
ETIM 5.0	EC002653	ETIM 6.0	EC002653
eClass 6.2	27-21-01-20	eClass 7.1	27-21-01-20
eClass 8.1	27-21-01-20	eClass 9.0	27-21-01-20
eClass 9.1	27-21-01-90		

**Product information**

Descriptive text technical data	Power supply optionally over the DIN mounting rail CH20M
Descriptive text accessories	CBX200 USB configuration adapter - 8978580000 DIN mounting rail, see Accessories

**Approvals**

Approvals



ROHS	Conform
------	---------

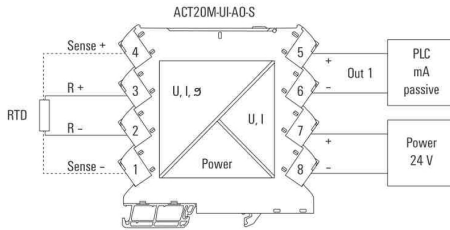
**Downloads**

Approval/Certificate/Document of Conformity	<a href="#">Declaration of Conformity</a>
Brochure/Catalogue	<a href="#">CAT 4.1 ELECTR 16/17 EN</a>
Engineering Data	<a href="#">EPLAN, WSCAD, Zuken E3.S</a>
Software	<a href="#">WI-Manager, DTM-Library for online installation</a>
User Documentation	<a href="#">Instruction sheet</a> <a href="#">measuring range table</a>

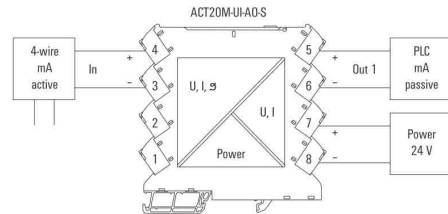
**ACT20M  
ACT20M-UI-AO-S**

**Weidmüller Interface GmbH & Co. KG**  
 Klingenbergstraße 16  
 D-32758 Detmold  
 Germany  
 Fon: +49 5231 14-0  
 Fax: +49 5231 14-292083  
 www.weidmueller.com

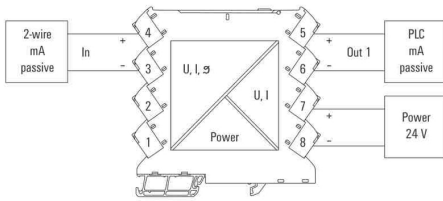
**Drawings**



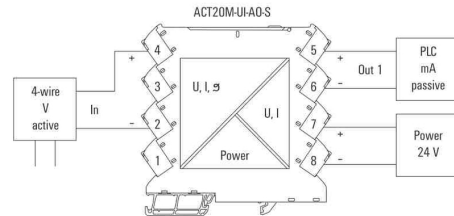
connection example



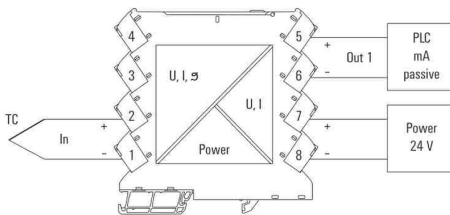
connection example



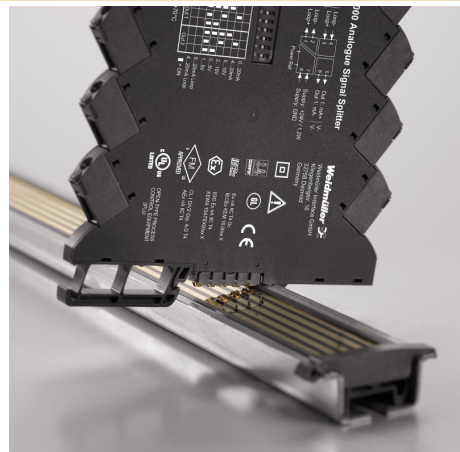
connection example



connection example



connection example

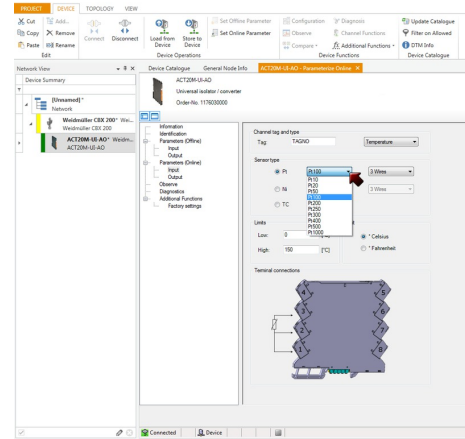
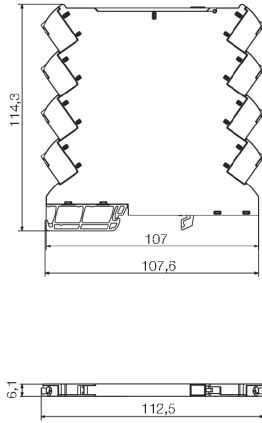


Power supply via the rail bus (housing example)

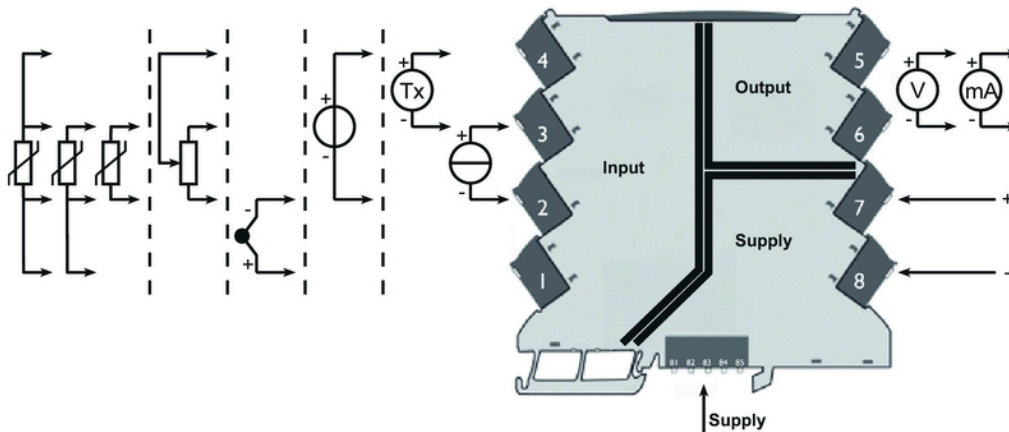
**ACT20M  
ACT20M-UI-AO-S**

**Weidmüller Interface GmbH & Co. KG**  
 Klingenbergstraße 16  
 D-32758 Detmold  
 Germany  
 Fon: +49 5231 14-0  
 Fax: +49 5231 14-292083  
 www.weidmueller.com

**Drawings**



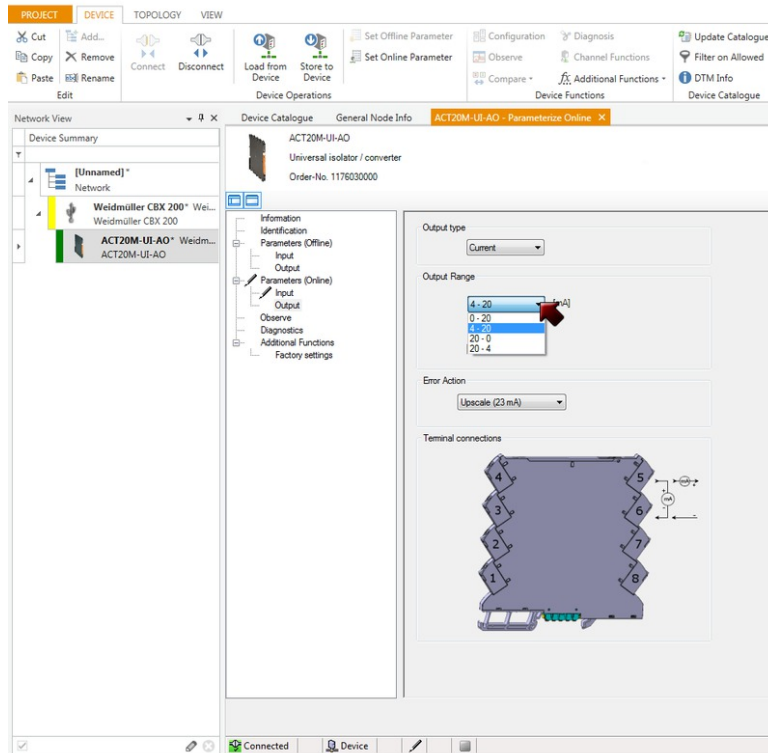
screenshot, setup temperature input with FDT2 / DTM software



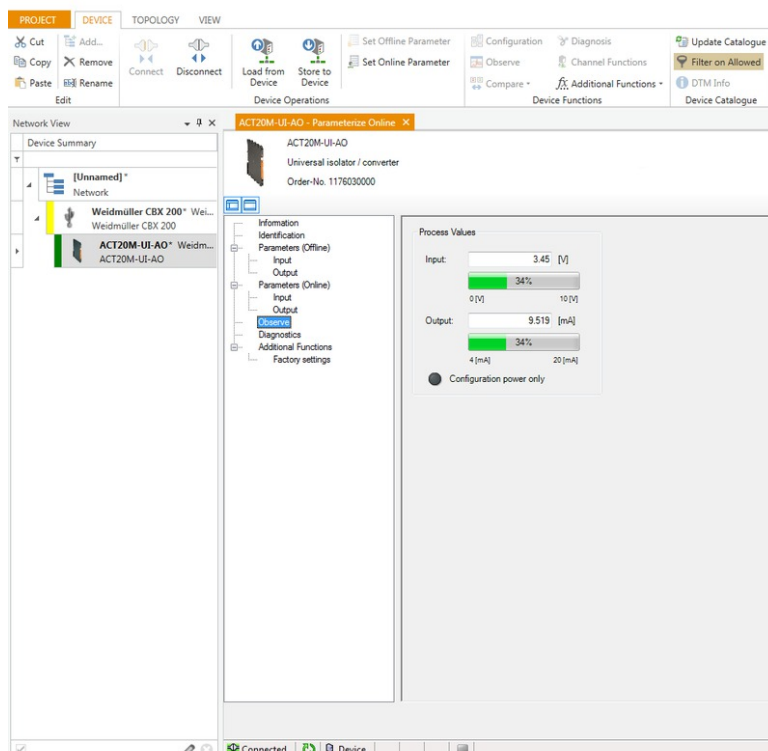
**ACT20M  
ACT20M-UI-AO-S**

**Weidmüller Interface GmbH & Co. KG**  
 Klingenbergstraße 16  
 D-32758 Detmold  
 Germany  
 Fon: +49 5231 14-0  
 Fax: +49 5231 14-292083  
 www.weidmueller.com

**Drawings**



screenshot, setup output with FDT2 / DTM software



screenshot, observe in-/output with FDT2 / DTM software