

ACT20P ACT20P-CMT-10-AO-RC-S

Weidmüller Interface GmbH & Co. KG
Klingenbergstraße 16
D-32758 Detmold
Germany
Fon: +49 5231 14-0
Fax: +49 5231 14-292083
www.weidmueller.com



ACT20P: The flexible solution

- Precise and highly functional signal converters
- Simple configuration via display (Pro DCDC II), FDT/DTM software or DIP switch
- Release levers simplify handling
- More space in the control cabinet, from 12.5 mm wide for two channels

General ordering data

Type	ACT20P-CMT-10-AO-RC-S
Order No.	1510470000
Version	Current-measuring transducer, Limit value monitoring, Signal converter/isolator, Current monitoring, Analogue output, Screw connection, Input measurement range: configurable, 0...5/10 A AC (RMS) or DC
GTIN (EAN)	4050118319583
Qty.	1 pc(s).

ACT20P
ACT20P-CMT-10-AO-RC-S

Weidmüller Interface GmbH & Co. KG
 Klingenbergstraße 16
 D-32758 Detmold
 Germany
 Fon: +49 5231 14-0
 Fax: +49 5231 14-292083
 www.weidmueller.com

Technical data**Dimensions and weights**

Width	22.5 mm	Width (inches)	0.886 inch
Height	117.2 mm	Height (inches)	4.614 inch
Depth	113.6 mm	Depth (inches)	4.472 inch
Weight	180 g	Net weight	158 g

Temperatures

Humidity	5...95 %, no condensation	Operating temperature	-25 °C...60 °C
Storage temperature	-40 °C...85 °C		

Probability of failure

MTTF	130 Years
------	-----------

Input

Number of inputs	1	Input signal	Current-carrying cable in feed-through hole, Diameter 10.5 mm
Input measurement range	configurable, 0...5/10 A AC (RMS) or DC	Input frequency	AC: 15...700 Hz (true root mean square), AC: 50 Hz (arithmetic average)

General data

Accuracy	< 0.75 % FSR	Configuration	DIP switch and potentiometer
Galvanic isolation	4-way isolator, between input / output / supply / relay	Mounting rail	TS 35
Power consumption, max.	2.2 W	Step response time	< 220 ms (10...90 %)
Supply voltage	18...30 V DC	Temperature coefficient	typ. 0.04 % / K, max. 0.09 % / K

Insulation coordination

EMC standards	IEC 61010-1:2010, 3rd Edition, IEC 61010-2-201:2013, 1st Edition	Galvanic isolation	4-way isolator, between input / output / supply / relay
Impulse withstand voltage	6.4 kV (1.2/50 µs)	Insulation voltage	4 kV _{eff} / 1 min.
Pollution severity	2	Rated voltage	300 V AC _{rms}
Standards	IEC 61010-1:2010, 3rd Edition, IEC 61010-2-201:2013, 1st Edition, EN 61326-1	Surge voltage category	III
Test voltage	4 kV		

Output (analogue)

Load resistance current	≤ 600 Ω	Load resistance voltage	≥ 10 kΩ
Output current	adjustable, 0...20 mA, 4...20 mA, -20...+20 mA	Output voltage	adjustable, 0...10 V, 2...10 V, 0...5 V, 1...5 V, -5...+5 V, -10...+10 V
Type (analogue output)	Voltage and current output (configurable)		

Creation date February 22, 2018 9:33:25 AM CET

Catalogue status 09.02.2018 / We reserve the right to make technical changes.

2

ACT20P
ACT20P-CMT-10-AO-RC-S

Weidmüller Interface GmbH & Co. KG
 Klingenbergstraße 16
 D-32758 Detmold
 Germany
 Fon: +49 5231 14-0
 Fax: +49 5231 14-292083
 www.weidmueller.com

Technical data**Output (digital)**

Alarm function	Surge current, Under-current, Alarm delay: 0... 10 s, Hysteresis 5% / 10%	Number of digital outputs	1
Type	Relay, 1 CO contact, normal / inverse adjustment	Max. switching voltage, DC	24 V
Max. switching voltage, AC	250 V	Rated switching current	6 A

Connection data

Type of connection	Screw connection	Tightening torque, min.	0.4 Nm
Tightening torque, max.	0.6 Nm	Clamping range, rated connection	1.5 mm ²
Clamping range, min.	0.5 mm ²	Clamping range, max.	2.5 mm ²
Wire connection cross section AWG, min.	AWG 30	Wire connection cross section AWG, max.	AWG 14

Classifications

ETIM 5.0	EC002048	ETIM 6.0	EC002475
eClass 6.2	27-21-09-02	eClass 7.1	27-21-09-02
eClass 8.1	27-21-09-02	eClass 9.0	27-21-09-02
eClass 9.1	27-21-01-23		

Approvals

Approvals



ROHS

Conform

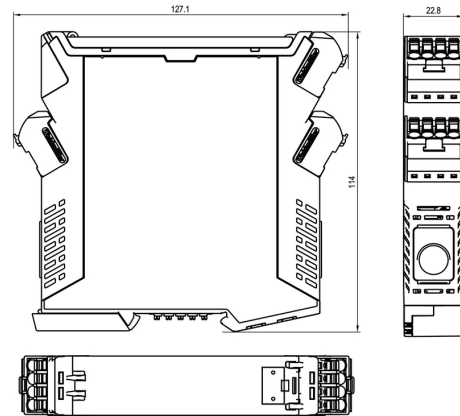
Downloads

Approval/Certificate/Document of Conformity	Declaration of Conformity
Brochure/Catalogue	CAT 4.1 ELECTR 16/17 EN
Engineering Data	EPLAN, WSCAD
Software	DIP switch configuration tool
User Documentation	Instruction sheet

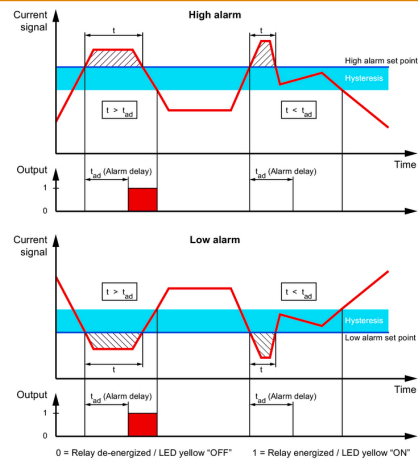
ACT20P
ACT20P-CMT-10-AO-RC-S

Weidmüller Interface GmbH & Co. KG
Klingenbergstraße 16
D-32758 Detmold
Germany
Fon: +49 5231 14-0
Fax: +49 5231 14-292083
www.weidmueller.com

Dimensioned drawing

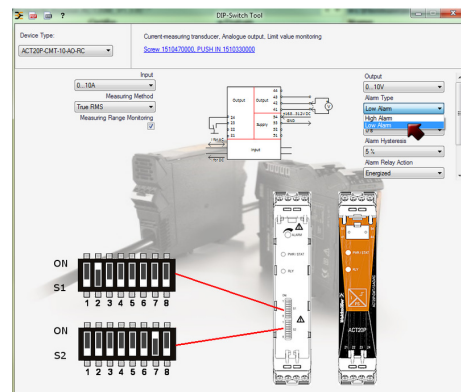


dimensions



DIP switch S1		DIP switch S2	
Current input range	1 2 3 4 5 6 7 8	Output range	1 2 3 4 5 6 7 8
0...5 A	<input type="checkbox"/>	0...10 V	<input type="checkbox"/>
0...10 A	1) <input type="checkbox"/>	2...10 V	<input type="checkbox"/>
0...20 A	<input type="checkbox"/>	0...5 V	<input type="checkbox"/>
0...25 A	2) <input type="checkbox"/>	1...5 V	<input type="checkbox"/>
0...30 A	<input type="checkbox"/>	-5...+5 V	<input type="checkbox"/>
0...40 A	<input type="checkbox"/>	-10...+10 V	<input type="checkbox"/>
0...50 A	3) <input type="checkbox"/>	0...20 mA	<input type="checkbox"/>
0...60 A	<input type="checkbox"/>	-20...+20 mA	<input type="checkbox"/>
Measuring method	1 2 3 4 5 6 7 8	Alarm relay action	1 2 3 4 5 6 7 8
True RMS	<input type="checkbox"/>	Energized	<input type="checkbox"/>
Arithmetic average	<input type="checkbox"/>	De-energized	<input type="checkbox"/>
Alarm delay time	1 2 3 4 5 6 7 8	Alarm hysteresis	1 2 3 4 5 6 7 8
0 s	<input type="checkbox"/>	5 %	<input type="checkbox"/>
2 s	<input type="checkbox"/>	10 %	<input type="checkbox"/>
5 s	<input type="checkbox"/>	Alarm type	1 2 3 4 5 6 7 8
10 s	<input type="checkbox"/>	High alarm	<input type="checkbox"/>
Measuring range monitoring	1 2 3 4 5 6 7 8	Low alarm	<input type="checkbox"/>
Yes	<input type="checkbox"/>		
No	<input type="checkbox"/>		
Output error action	1 2 3 4 5 6 7 8		
Upscale	<input type="checkbox"/>		
Downscale	<input type="checkbox"/>		
Transfer function	1 2 3 4 5 6 7 8		
Normal	<input type="checkbox"/>		
Inverse	<input type="checkbox"/>		

■ = ON
1) ACT20P-CMT-10-AO-RC-S
2) ACT20P-CMT-30-AO-RC-S
3) ACT20P-CMT-60-AO-RC-S, ACT20P-CMT-60-RC-S



example for DIP switch setting (with ACT20 tool)

ACT20P
ACT20P-CMT-10-AO-RC-S

Weidmüller Interface GmbH & Co. KG
Klingenbergstraße 16
D-32758 Detmold
Germany
Fon: +49 5231 14-0
Fax: +49 5231 14-292083
www.weidmueller.com

Drawings

