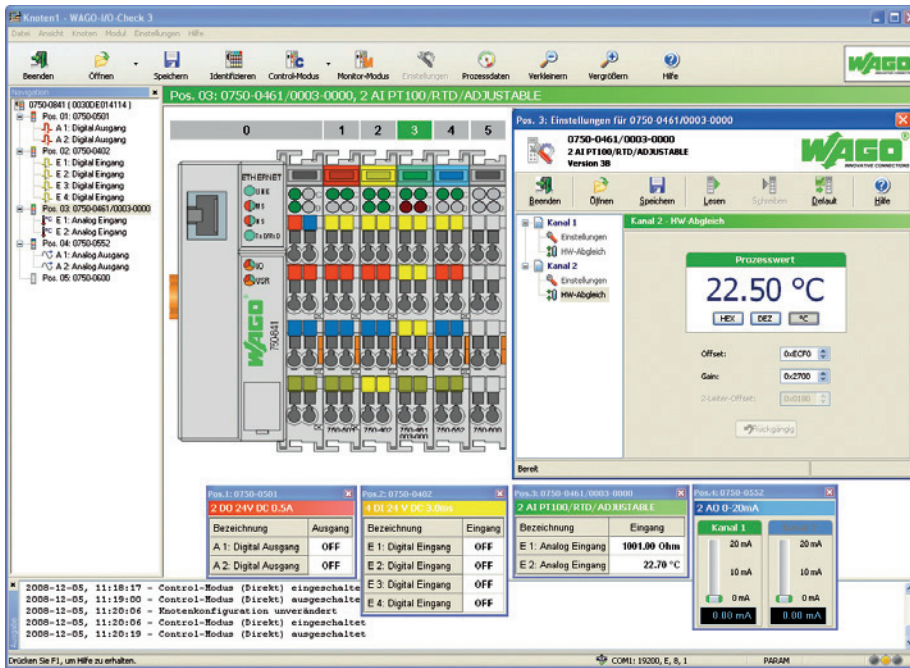


WAGO-I/O-CHECK



WAGO-I/O-CHECK is an easy-to-use Windows application for operating and displaying a WAGO-I/O-SYSTEM 750 node without connecting the node to a fieldbus system. The software reads the configuration from the node and displays it as an on-screen graphic. The graphic can be printed together with a configuration list as documentation.

With WAGO-I/O-CHECK, it is possible to display and determine the process data of the bus modules. The field wiring, including all sensors and actuators, can thus be checked before startup.

Application-specific settings, such as the baud rate or sensor types, can be made with select interface, Pt100 and thermocouple modules.

For communicating between WAGO-I/O-CHECK and the node, the coupler must be connected at a PC's vacant serial or USB port using the communication cable supplied in the kit with the system.

WAGO-I/O-CHECK		
Version	Delivery type	Item No.
RS-232 Set	CD-ROM and Serial Communication Cable	759-302
USB Set	CD-ROM and USB Communication Cable	759-302/000-923
CD	CD-ROM	759-920

Supported operating systems	Windows XP (SP3 or later), Windows 7
System requirements	
Processor	1 GHz or higher, with 32-bit (x86) or 64-bit (x64)
Memory	min. 1 GB RAM
Hard disk storage	min. 150 MB
Graphics resolution	min. 1024 x 786
Other system requirements	CD-ROM and Mouse required
Delivery type	Installation file (download)
Data sheet and further information, see:	wago.com/759-302

Windows® is a registered trademark of Microsoft Corporation.