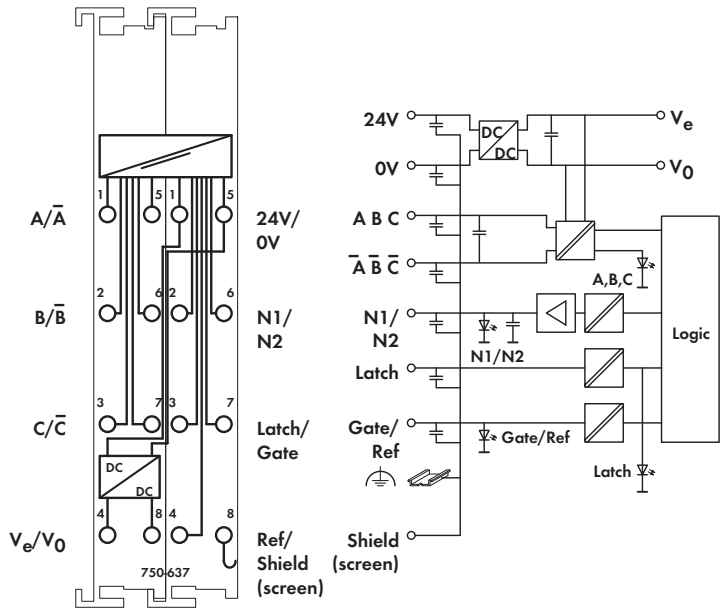


Delivered without miniature WSB markers



This module is an interface for incremental encoders with standard connections (e.g., RS-422, differential, single-ended).

A counter with quadrature decoder as well as a latch for the zero impulse can be read or enabled by the control. The control can set the counter or transmit the counter value to the Latch. As an alternative this can also be done using input "C" or "Latch".

The frequency data is automatically acquired and can also be transmitted to the control.

A counter lock-out is possible using input G. Input "Ref" can be used to activate the initial point "C" function.

The cam outputs N1 and N2 indicate whether the counter value is within a defined range of values. The range can be adjusted.

The module must be powered using an external 24VDC power supply, from which power to the transmitter (Ue, U1) can also be derived.

The shield (screen) is directly connected to the DIN rail.

Description	Item No.	Pack. Unit
Incremental Encoder Interface RS422/32Bit	750-637	1
Incremental Encoder Interface 24V/32Bit differential	750-637/000-001	1
Incremental Encoder Interface 24V/32Bit single ended	750-637/000-002	1
Inkremental-Encoder-Interface RS422/32Bit/Single Interpreter	750-637/000-003	1
Incremental Encoder Interface 24V/32Bit single ended/cam outputs	750-637/000-004	1
<b>Accessories</b>		
<b>Miniature WSB Quick marking system</b>		
plain	248-501	5
with marking	see Section 11	
<b>Approvals</b>		
Conformity marking	CE	
Korea Certification		
Marine applications (versions upon request)	ABS, BV, DNV, GL, KR, LR, NKK, PRS, RINA	
UL 508		
ANSI/ISA 12.12.01	Class I, Div. 2, Grp. ABCD, T4	
TÜV 12.1297 X (Brazil)	Ex nA IIC T4 Gc (750-637)	
TÜV 07 ATEX 554086 X	I M2 Ex d I Mb, II 3 G Ex nA IIC T4 Gc, II 3 D Ex tc IIIC T135°C Dc	
IECEx TUN 09.0001 X	Ex d I Mb, Ex nA IIC T4 Gc, Ex tc IIIC T135°C Dc	

Technical Data	
Sensor connection	A, A/, B, B/, C, C/
Current consumption (internal)	110 mA
Counter	32 bits binary
Max. operating frequency	250 kHz
Quadrature decoder	4-fold report
Zero impulse latch	32 bits
Commands	read, set, enable
Power supply	24 V DC (-15 % ... +20 %)
Current consumption (typ.)	35 mA without load
Operating voltage of sensor	5 VDC
Sensor max. output current	300 mA
Internal bit width	1 x 32 bits data 1 x 8 bits control/status
Digital outputs (N1, N2)	
Output voltage	24 V DC
Output current (max.)	0.5 A short-circuit protected
Digital inputs (Latch, Gate, Ref)	
Signal voltage (0)	-3 V ... +5 V DC
Signal voltage (1)	15 V ... 30 V DC
Input current (typ.)	Latch 5 mA, Gate 7 mA, Ref. 7 mA
Wire connection	CAGE CLAMP®
Cross sections	0.08 mm² ... 2.5 mm² / AWG 28 ... 14
Strip lengths	8 ... 9 mm / 0.33 in
Width	24 mm
Weight	103.3 g
EMC immunity of interference	acc. to EN 61000-6-2, marine applications
EMC emission of interference	acc. to EN 61000-6-4, marine applications